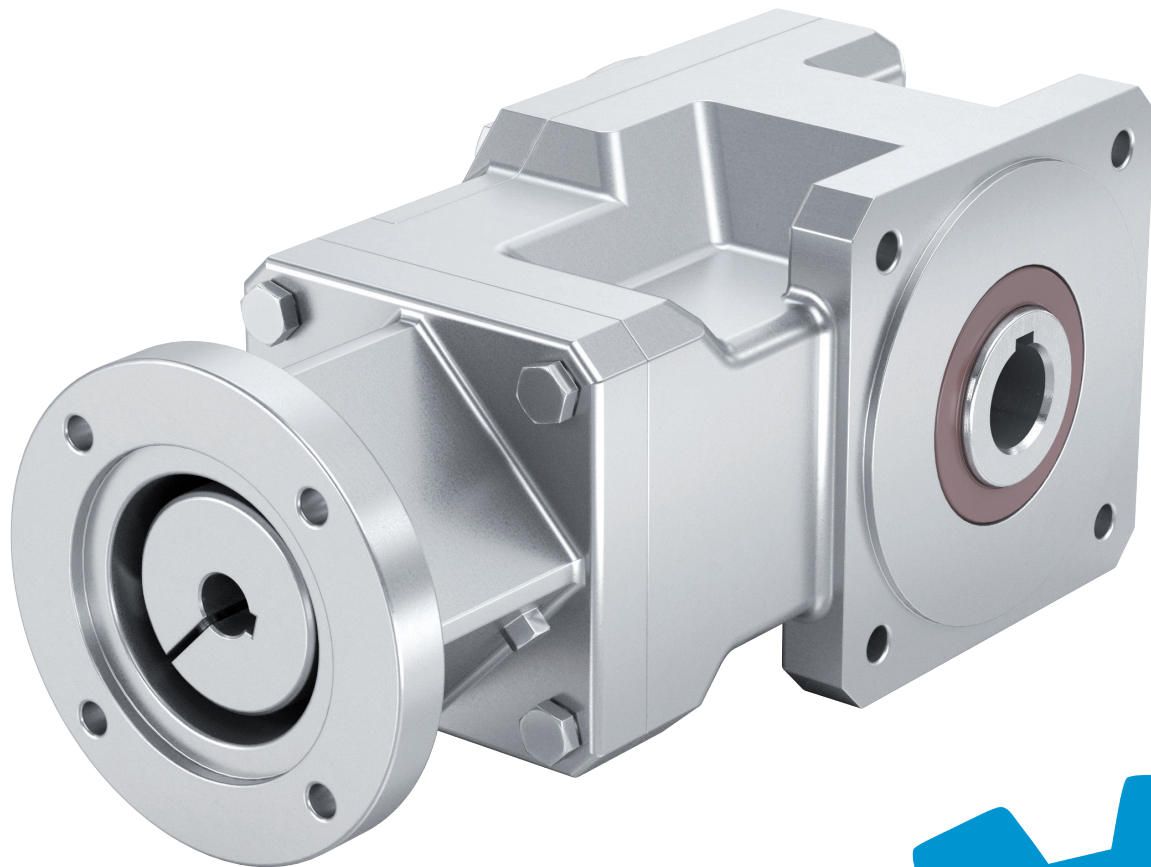


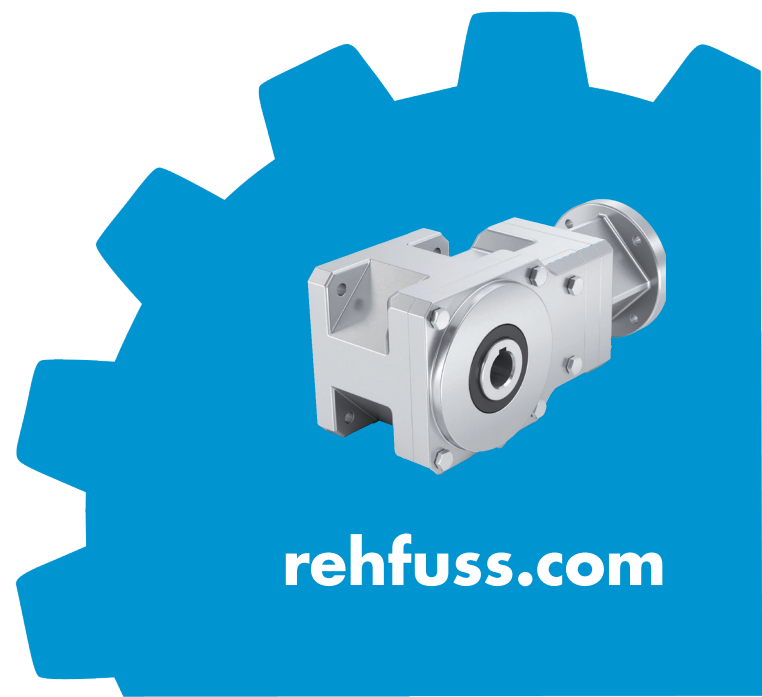


BEVEL HELICAL GEARBOX KSN / KS

The compact drive unit for high-dynamic applications



**success based on
quality and reliability**



rehfuss.com

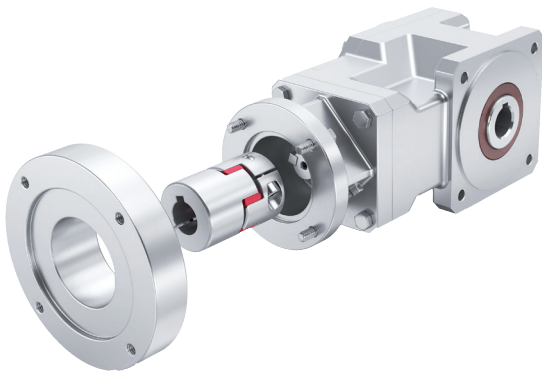
Technical data

T2N = Nominal output torque, T2B = Max. acceleration torque, T2S = Emergency stop torque. (max. 500 times), J = Mass moment of inertia

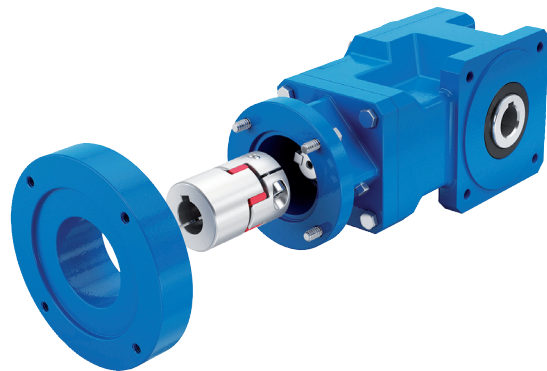
Ratios	KSN205 / KS205				KSN210 / KS210				KSN230 / KS230			
	T2N	T2B	T2S	J	T2N	T2B	T2S	J	T2N	T2B	T2S	J
i	Nm	Nm	Nm	kgcm ²	Nm	Nm	Nm	kgcm ²	Nm	Nm	Nm	kgcm ²
4:1	20	31	40	1,5	24	31	43	1,9				
6:1	30	40	60	1,3	36	48	70	1,7				
8:1	35	45	80	1,2	45	58	81	1,6				
10:1	30	40	60	1,0	36	48	70	1,4				
12:1	30	40	60	0,9	36	48	70	1,3				
14:1	30	40	60	0,9	36	48	70	1,3				
15:1	35	45	70	1,0	45	58	81	1,4				
18:1	35	45	70	0,9	45	58	81	1,3				
20:1	35	45	80	0,9	60	70	85	1,3				
21:1	35	45	70	0,9	45	58	81	1,3				
24:1	35	45	80	0,9	60	70	85	1,3				
28:1	35	45	80	0,9	60	70	85	1,3				
Torsional backlash [arcmin]												
< 6				< 6								
Weight approx. [kg]												
KSN205 = 6,4 / KS205 = 4,0				KSN210 = 9,7 / KS210 = 5,0								
Efficiency at full load [%]												
92												

in preparation

Radial force [N] at n2 = 200 1/ min		
1500	2200	
Nominal input speed / max. input speed [1/min] – allowed operation temperature must not be exceeded		
3000 / 6000	3000 / 6000	
Life time [h]		
> 30.000		
Lubrication		
H1 registered lifetime lubrication		
Protection class		
IP66 (optional: IP69K)		
Installation position		
universal		
Operation temperature		
-20°C to +90°C		

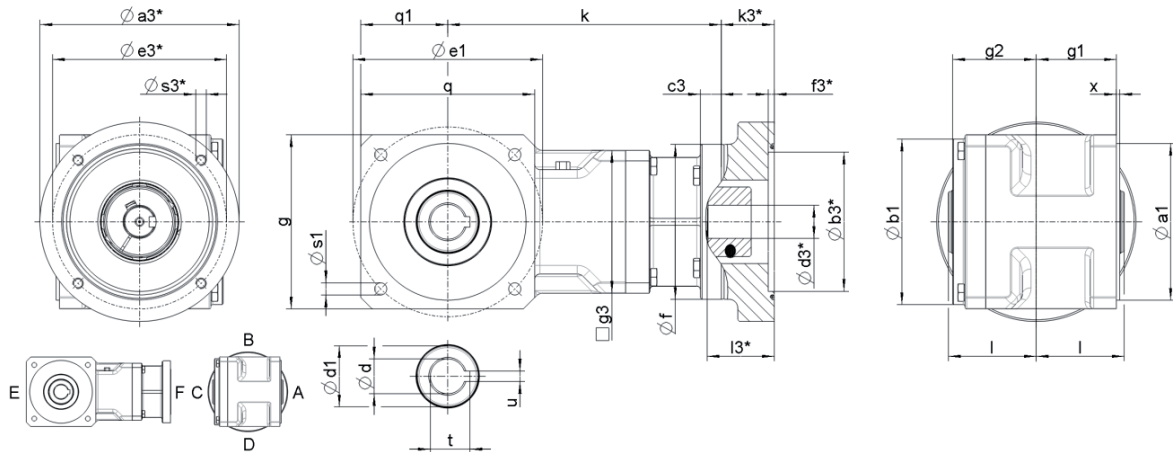


KSN210, Stainless steel
for particularly high requirements
for corrosion protection



KS210, Aluminum
is the weight-optimized version

Dimensions (in mm):



Type of gearbox		KSN205 / KS205	KSN210 / KS210	KSN230 / KS230
Gearbox	$\varnothing a1_{j6}$	75	90	
	$\varnothing b1$	75	95	
	c3	9	12	
	$\varnothing e1$	95	109	
	$\varnothing f$	89	89	
	g	80	100	
	g1	40	46	
	g2	42	48	
	$\square g3$	75	82	
	k	143,5	157,2	
	q	80	100	
	q1	40	50	
	s1	7	7	
	x	2	2	
	$\varnothing d^{H7}$	20	20	
	$\varnothing d1$	30	35	
	l	44	50,5	
	t	22,8	22,8	
u_{JS9}	6	6		
Motor flange / motor shaft				
Motor flange*	$\varnothing a3$	*Motor-specific flange- and motor shaft geometries. Dimensions vary.		
	$\varnothing b3^{H7}$			
	$\varnothing e3$			
	f3			
	s3			
	k3			
Motor shaft*	$\varnothing d3^{H7}$			
	l3			

in preparation

Order key:

KS(N)210HZ-0006-MF-XXXXXX

Model series
Stage
Size
Hollow shaft with centering collar
Ratios
Motor flange
Motor shaft code
Motor flange code

KSN: Stainless steel
KS: Aluminum

Highlights

SYMMETRICAL INLINE HOUSING DESIGN

compact design enables universal space-saving mounting in all positions

SMOOTH HOUSING SURFACE

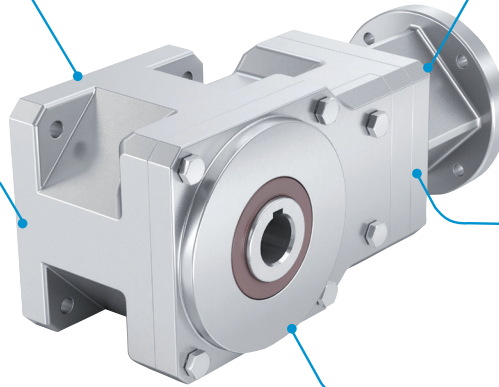
for particularly high demands on the surface finish e.g. wash-down applications

LOW TORSIONAL BACKLASH

H1 REGISTERED LIFETIME LUBRICATION

Mounting position - independent lubricant filling

HIGH EFFICIENCY



MAINTENANCE-FREE LIFETIME LUBRICATION

TORSIONAL STIFF SERVO COUPLING

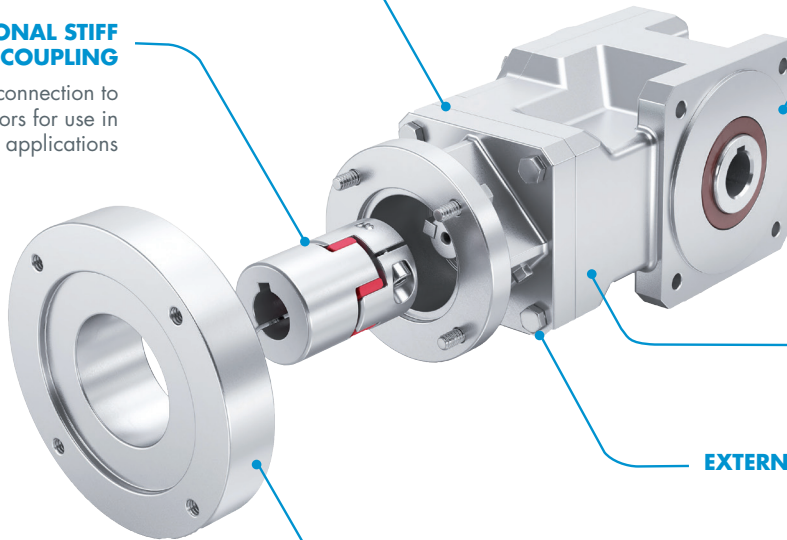
enables an optimal connection to standard and servo motors for use in highly dynamic applications

SQUARE FLANGE

with external centering

INTEGER RATIOS

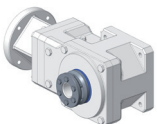
EXTERNAL STAINLESS STEEL SCREWS



MODULAR MOTOR FLANGE SYSTEM

for the adaptation of all common motors

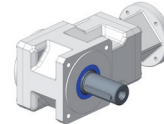
Options:



Hollow shaft with shrink disc



Stainless steel cover for Covering the hollow shaft



Version with solid shaft

Rehfuss Drive Solutions GmbH

E-Mail: info@rehfuss.com
rehfuss.com

Phone: +49 7432 7015-0
Fax: +49 7432 7015-90