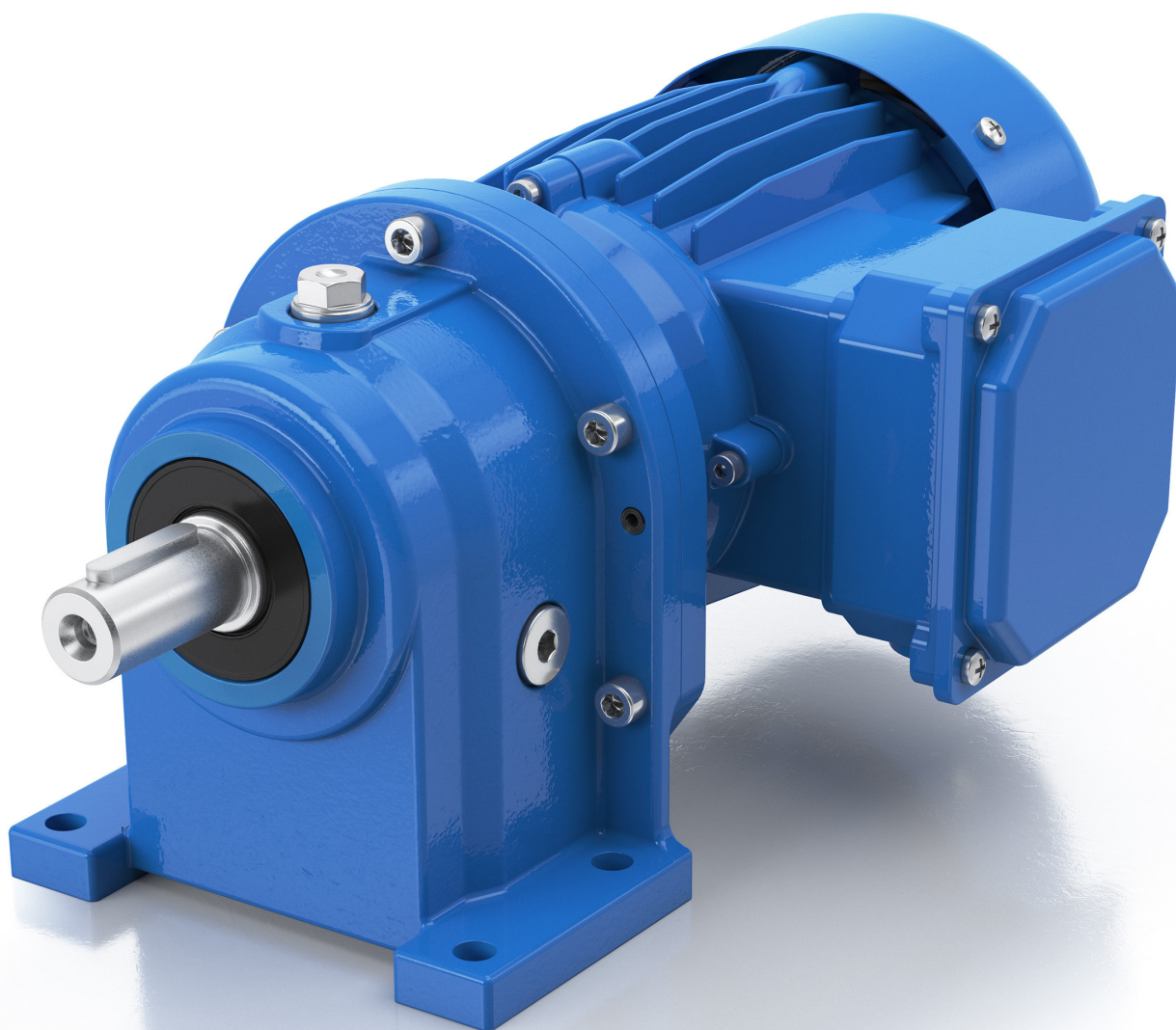


HELICAL GEARBOXES AND GEARED MOTORS

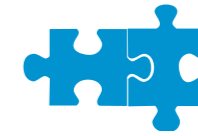


**success based on
quality and reliability**

rehfuss.com

EFFICIENT AND POWERFUL

Our helical gears and helical geared motors are ideal for demanding continuous operation. The housings are produced from first class grey cast iron with rugged walls. The product design therefore ensure extreme torsional resistance and minimal noise. Forces are transmitted through hardened helical gears produced from high quality steel, with precision ground tooth profiles. Optimal running smoothness results from these design features.

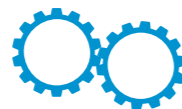


MODULAR SYSTEM

HIGH PROTECTION CLASS



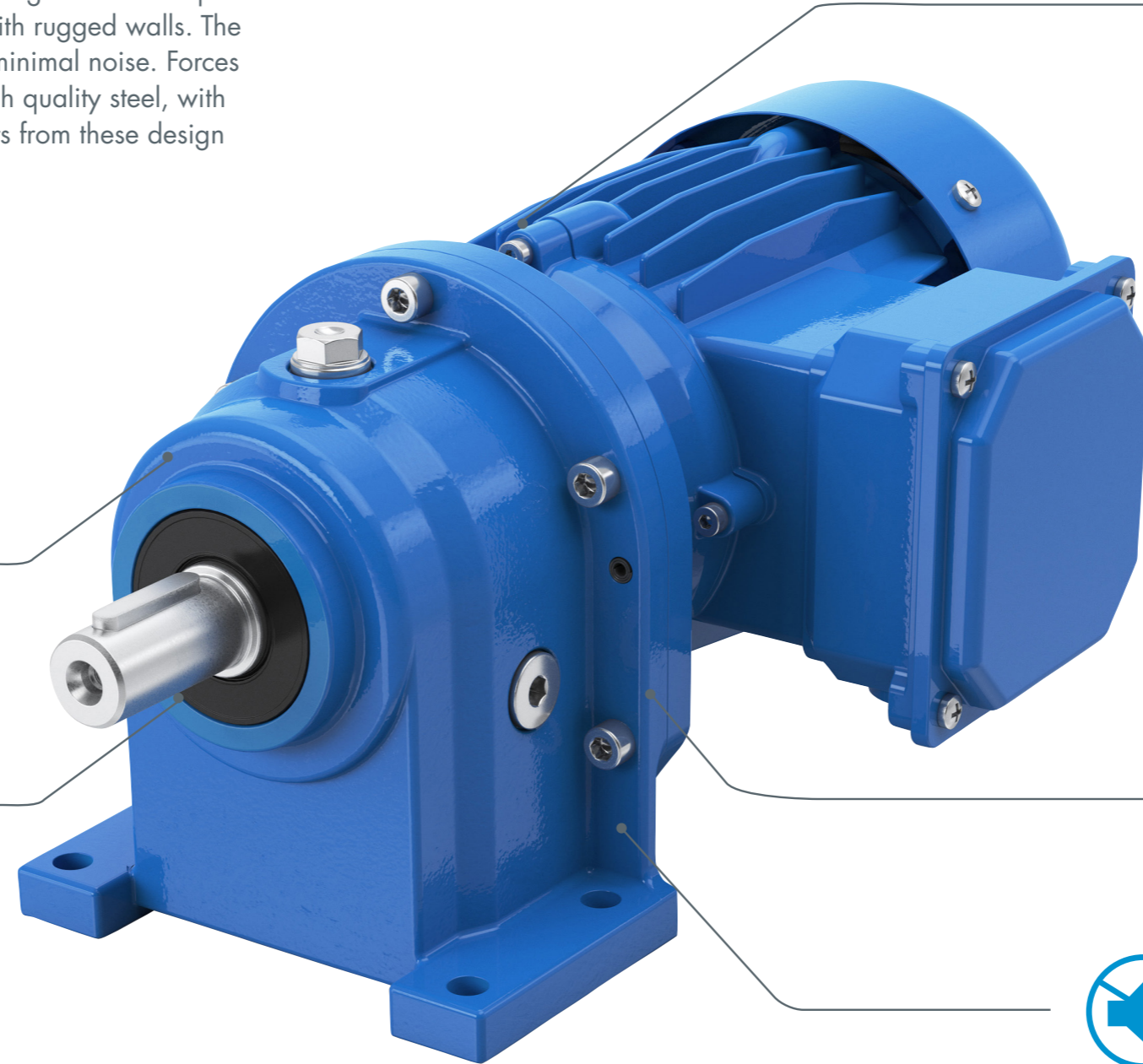
HIGH EFFICIENCY ON TO IP68



EXCEPTIONALLY LONG SERVICE LIFE

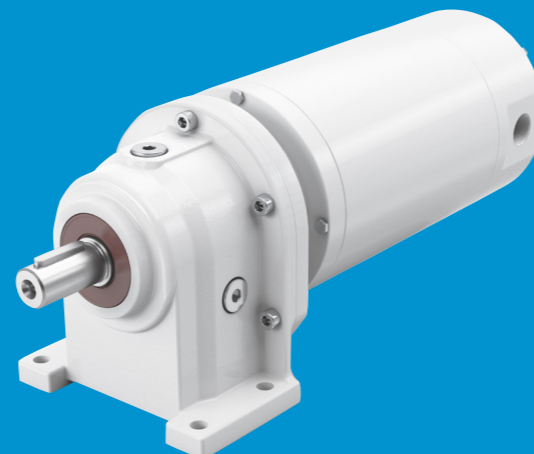


LOW NOISE AND OPTIMAL SMOOTHING



EXECUTION:

- Optionally with a special paint finish
- Very easy to clean
- Combined with our TENV-Motors made of aluminum
- Areas of application are in the food, beverage and pharmaceutical industries



CHARACTERISTICS:

- Optimised size/performance ratio
- Highly efficient and low-maintenance
- Designed for permanent operation under rough conditions
- Housing produced from high quality grey cast iron with rugged walls
- High axial and radial forces on the output shaft are permitted
- Extremely torsion-resistant
- Hardened helical gears produced from high quality steel with precision ground tooth profiles
- Diverse attachment options

OPTIONS:

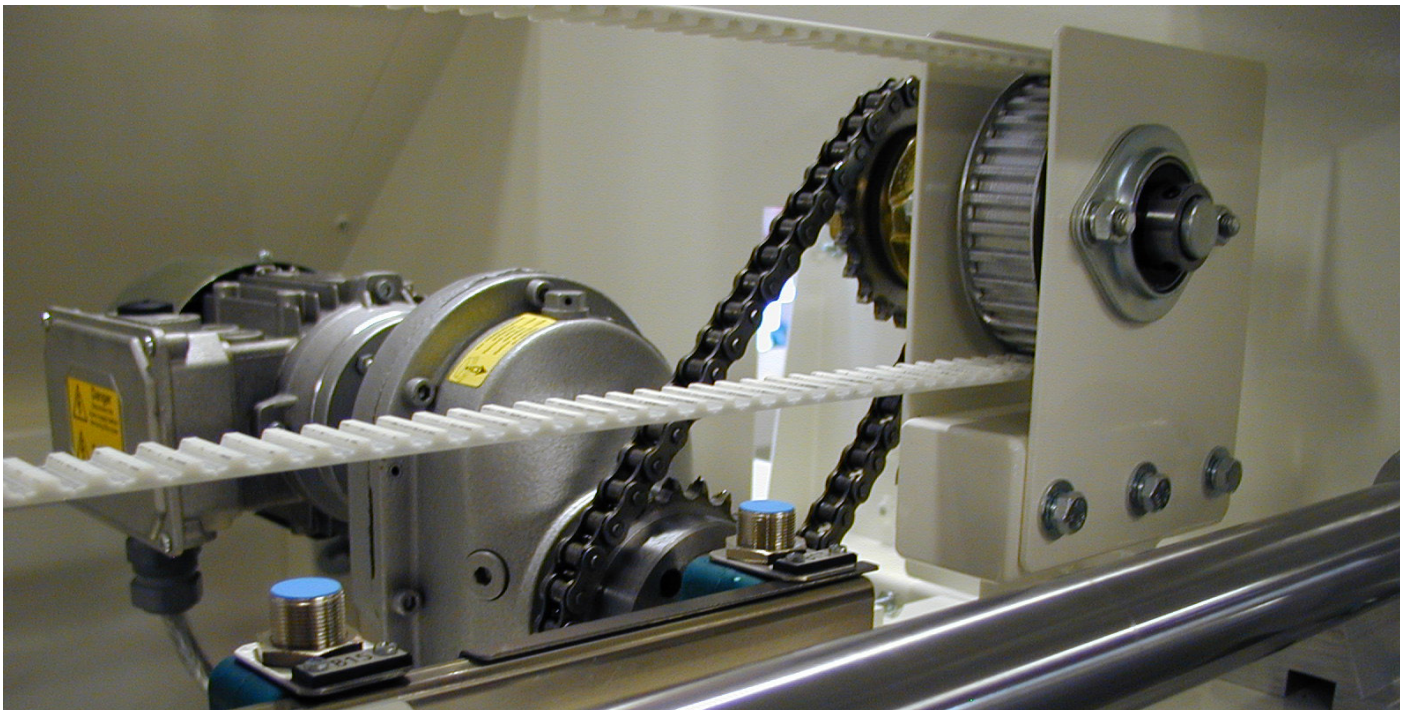
- Foot mounted, flange mounted or foot and flange mounted versions
- All installation positions possible
- IEC-adaptor to suit standard and servo motors
- NEMA version
- Free input shaft
- ATEX specification

PERFORMANCE DATA:

Character	Value	Unit
Power range	up to 13,4	kW
Torque range	up to 770	Nm
Ration range	1,516 - 2,612.480	i

AREAS OF APPLICATION:

- Printing and paper machines
- Conveyor technology
- Pumps and compressors
- Construction machinery
- Wood working and processing
- Packaging machines



Reh fuss Drive Solutions GmbH

E-Mail: info@rehfuss.com
rehfuss.com

Tel.: +49 7432 7015-0